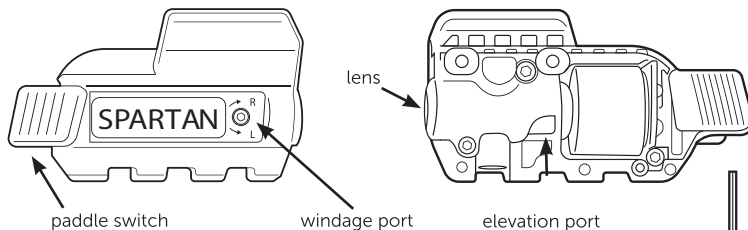
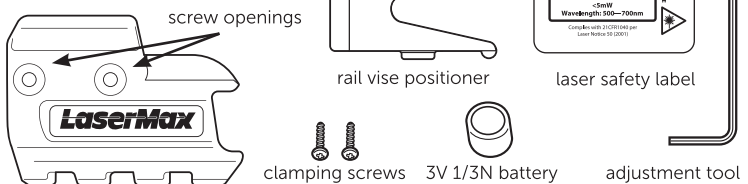


PARTS IDENTIFICATION

Right Housing



Left Housing

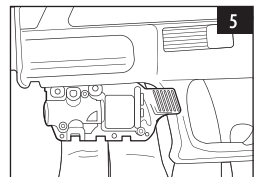
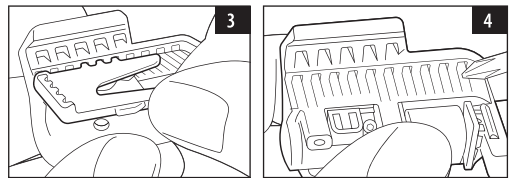
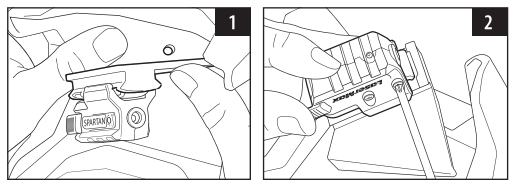


See this sight installed at www.youtube.com/LaserMaxInc.

IMPORTANT: Prior to installation, battery change, cleaning or maintenance, follow the firearm operator's manual to ensure that the firearm is unloaded.

INSTALLATION

- To separate Spartan™ from its packaging, first rotate the disposable rail support upward to expose clamping screws. You may need to press the two small posts on rail support to release them from the tray (figure 1).
- Use a Phillip's head screwdriver (not provided) to loosen the two (w) clamping screws in the left housing (figure 2).
- Separate the left and right laser housings. Remove rail vise positioner (figure 3) and set it aside.
- Identify the right housing and take note of its slotted channels. (figure 4).
- Position the right housing against the rail of the firearm as shown (figure 5). Hold in place on rail at the desired location between trigger guard and muzzle.



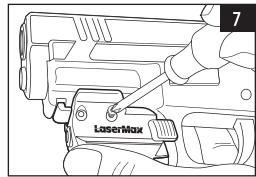
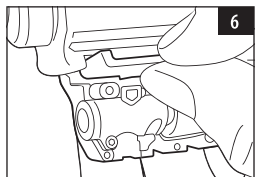
- Slide the curved front end of rail vise positioner into the Picatinny rail slot and position the three teeth into the corresponding slotted channels in right housing (figure 6).

Note: While holding this assembly in place with your support hand, assume a normal grip on the firearm and test the trigger finger's reach to the paddle switch to ensure optimal placement on the rail. To customize the fit, remove right housing reposition as desired, then place the slotted channels of right housing back onto the teeth of rail vise positioner in its new, preferred location.

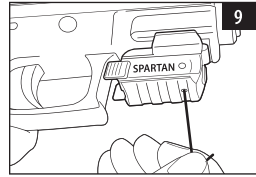
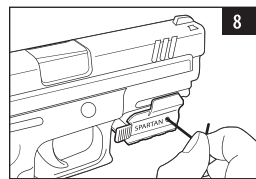
- Mate left laser housing with right housing and press the two halves together to close the gap.
- While holding the completed assembly in place on the pistol rail, tighten the two (2) clamping screws into the holes in the left housing (figure 7).
- Partially tighten clamping screws with a Phillip's head screwdriver (not provided). Ensure that the laser is attached at the desired point on the rail before completely tightening the screws. Do not overtighten.

OPERATING INSTRUCTIONS

- To turn the laser on, press and release the paddle switch from either side. Press and release again to turn the laser off.
- To switch the laser aiming point from pulse to steady, turn the laser on, then press and hold the paddle switch for 5 seconds. Press and hold the paddle switch again to return to the previous mode.
- To save power and prevent inadvertent battery drain, Spartan™ will turn off automatically after a ten minute period of inactivity. Cycle the paddle switch to turn the laser back on.



ALIGNING THE LASER



- Alignment adjustments should be made at a minimum of 10 yards distance from the target. To begin, insert the adjustment tool into one of the two alignment ports (figures 8 & 9) and slowly rotate the tool while comparing the laser position on target to the fixed sights. Important: Do not turn alignment screws more than one full turn in either direction, from their factory position. This may cause damage to the laser and void the warranty. A one quarter turn will result in a movement of about 7 inches at 10 yards.

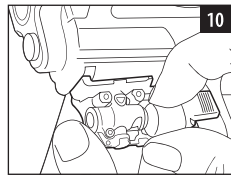
- Windage adjustment with the muzzle pointing forward and the adjustment tool inserted into the alignment port on the right side, a clockwise turn will shift the laser aiming point to the right and a counterclockwise turn will shift the laser beam to the left.
- Elevation adjustment with the muzzle pointing forward and the adjustment tool inserted into the alignment port on the bottom, a clockwise turn will shift the laser beam down and a counterclockwise turn will shift the laser beam up.

Note: a slight shift in alignment may be observed after firing Spartan™ for the first time. Recheck alignment after break in and readjust as necessary.

BATTERY PLACEMENT

Spartan™ can remain on the firearm or be removed to change batteries. Follow these steps:

- Use a Phillip's head screwdriver to loosen the clamping screws from left housing.
- Remove left housing to expose the battery compartment.



- Carefully remove the expended 1/3N battery (see figure 10).
- Insert a fresh 1/3N battery with the negative (-) side facing the gold contact.
- Mate left housing with right housing and press the two halves together to close the gap.
- While holding the assembly in place on the pistol rail, tighten the two (2) clamping screws into the holes in left housing.

- Partially tighten the screws with a Phillip's screwdriver.

- Ensure that the laser is attached at desired point on rail before completely tightening the screws. Do not over-tighten.

CLEANING

After repeated fire, the lens may become clouded with gunpowder residue. For best results, it is recommended that this area be cleaned along with the firearm after each use. To clean the lens follow these steps:

- Keep firearm pointed in a safe direction.
- Confirm laser is off.
- Dampen the end of a cotton swab with isopropyl alcohol.
- Apply dampened swab to lens and polish in a small circular pattern. Be sure to clean around the edges of the lens.

WARNING

Care should be taken when applying oil or lubricant to clean the firearm. Getting oil or lubricant on laser components may cause damage and void the factory warranty. Spartan™ should not be submerged in or flushed with lubricants or cleaning solvents.

WARNING



- **INGESTION HAZARD:** This product contains a button cell or coin battery.
- **DEATH** or serious injury can occur if ingested.
- A swallowed button or coin battery can cause **Internal Chemical Burns** in as little as **2 hours**.
- **KEEP** new and used batteries **OUT OF REACH OF CHILDREN**
- **Seek immediate medical attention** if a battery is suspected to be swallowed or inserted inside any part of the body.

WARNING: THIS PRODUCT CAN EXPOSE YOU TO LEAD, WHICH IS KNOWN TO THE STATE OF CALIFORNIA TO CAUSE CANCER, AND BIRTH DEFECTS OR OTHER REPRODUCTIVE HARM. FOR MORE INFORMATION GO TO WWW.P65WARNINGS.CA.GOV.

REPLACEMENT PARTS

06049-0-1	Rail vise positioner
04816-A-1	Adjustment tool
06404-0-1	Clamping screws

- Remove and immediately recycle or dispose of used batteries according to local regulations and keep away from children. Do NOT dispose of batteries in household trash or incinerate.”
 - Even used batteries may cause severe injury or death.
 - Call a local poison control center for treatment information.
 - Non-rechargeable batteries are not to be recharged.
 - Do not force discharge, recharge, disassemble, heat above 140°F or incinerate. Doing so may result in injury due to venting, leakage, or explosion resulting in chemical burns.
 - This product uses a 1/3N battery with a Nominal Voltage of 3 Volts
- Do not mix old and new batteries, different brands or types of batteries, such as alkaline, carbon-zinc, or rechargeable batteries.”
 - Remove and immediately recycle or dispose of batteries from equipment not used for an extended period of time according to local regulations.
 - Always completely secure the battery compartment. If the battery compartment does not close securely, stop using the product, remove the batteries, and keep them away from children.
 - Ensure the batteries are installed correctly according to polarity (+ and -).

WARNING: Firearm should be cleaned and lubricated exactly as directed in the owner’s manual. Excess lubricant can interfere with the proper function of both the firearm and the CenterFire® laser. Lasermax components should never be submerged or flushed with cleaning solvents. Failure to adhere to these guidelines may cause damage and void the factory warranty.

LASERMAX LIMITED WARRANTY

LaserMax is pleased to offer a five (5) year limited warranty for this product. To take advantage of this coverage, the product must be registered no later than 90 days after purchase.

This product may be registered by completing a Registration Form which may be found at www.lasermax.com/support or by contacting the LaserMax Customer Service Department at 1-800-527-3703. The LaserMax Limited Warranty extends specific legal rights to the registrant. Other rights, which vary from state to state, may also apply. This product is warranted to be free from defects in material and workmanship at the time of purchase. This limited warranty does not cover expendable parts (ex: batteries), that have definite and predictable life expectancies. This warranty does not cover products that LaserMax determines have been exposed to abnormal use in any way. Examples of abnormal use include, but are not limited to, damage from mishandling, misuse or abuse, damage from exposure to abnormal conditions, damage from improper care and maintenance, or installation of the product in or on any firearm model the product is not specifically advertised to be used with. Warranty coverage begins on the date of purchase and ends five (5) years after date of purchase. This limited warranty extends only to the original registrant and is non-transferable. To file a warranty claim, a warranty repair request must be submitted, and a Return Merchandise Authorization (RMA) number issued by the LaserMax Warranty Department, within five (5) years from date of purchase. Following submission of a warranty claim, LaserMax reserves the right to inspect the product to determine its eligibility for warranty coverage. If deemed eligible, LaserMax will repair or replace the part(s)/product that LaserMax, at its sole discretion, determines to be defective during the warranty period. If deemed ineligible, LaserMax will return the part(s)/product with an explanation of why coverage is not available. LaserMax reserves the right to replace defective part(s)/product with an equivalent substitute product at its sole discretion. Any and all implied warranties, including the implied warranties of merchantability, fitness for a particular purpose, and non-infringement, also begin on the date of purchase and end five (5) years after date of purchase. This limitation does not apply to residents of states that disallow limitations on the length of implied warranties. The preceding process is both the exclusive remedy and LaserMax’s exclusive liability for any warranty claim. LaserMax will not, under any circumstances, be liable for any incidental, indirect, consequential, punitive or exemplary damages (even if LaserMax has been notified of the possibility of such damages) resulting from or related to a product, including, without limitation, any loss of profit, opportunity, or damages in excess of the purchase price of the warranted product. This limitation does not apply to residents of states that disallow limitations on incidental or consequential damages.

LaserMax Products
Rogers, AR 72756 USA
www.lasermax.com

For patent information, please visit:
www.lasermax.com/patents
SPS-515 11/24



IF YOU EXPERIENCE AN ISSUE WITH YOUR CENTERFIRE® LASER PLEASE DO NOT RETURN IT TO THE STORE.

Contact LaserMax Customer Service: 800-527-3703



SPS-R
Red Laser
CLASS 3R VISIBLE LASER
Output Power: <5mW
Wavelength: 650nm

SPS-G
Green Laser
CLASS 3R VISIBLE LASER
Output Power: <5mW
Wavelength: 510-535nm

REMINDER

Aiming a laser beam at moving vehicles including boats, aircraft, trains, and construction equipment may be illegal. Check current applicable laws and follow them accordingly.

DANGER

Laser radiation is emitted from the front aperture of the laser when the switch is activated.

WARNING

Avoid direct eye exposure to beam. Do not point laser at anything you do not wish to destroy.

NOTICE:

The FDA requires the label supplied with your laser be affixed to the outside of the gun near the laser aperture.



ADJUSTABLE FIT LASER



OPERATOR'S MANUAL

LaserMax