

BATTERY WARNING

- Remove and immediately recycle or dispose of used batteries according to local regulations and keep away from children. Do NOT dispose of batteries in household trash or incinerate.”
- Even used batteries may cause severe injury or death.
- Call a local poison control center for treatment information.
- Non-rechargeable batteries are not to be recharged.
- Do not force discharge, recharge, disassemble, heat above 140°F or incinerate. Doing so may result in injury due to venting, leakage, or explosion resulting in chemical burns.

This product uses a 1/3N battery with a Nominal Voltage of 3 Volts

Battery Type: 1/3N

Nominal Voltage:3.0V

- Do not mix old and new batteries, different brands or types of batteries, such as alkaline, carbon-zinc, or rechargeable batteries.”
- Remove and immediately recycle or dispose of batteries from equipment not used for an extended period of time according to local regulations.

- Always completely secure the battery compartment. If the battery compartment does not close securely, stop using the product, remove the batteries, and keep them away from children.
- Ensure the batteries are installed correctly according to polarity (+ and -).

⚠ WARNING

- INGESTION HAZARD:** This product contains a button cell or coin battery.
- DEATH** or serious injury can occur if ingested.
- A swallowed button or coin battery can cause Internal Chemical Burns** in as little as **2 hours**.
- KEEP** new and used batteries **OUT OF REACH OF CHILDREN**
- Seek immediate medical attention** if a battery is suspected to be swallowed or inserted inside any part of the body.



LASERMAX Limited Warranty



LaserMax is pleased to offer a five (5) year limited warranty for this product. To take advantage of this coverage, the product must be registered no later than 90 days after purchase.

This product may be registered by completing a Registration Form which may be found at www.lasermax.com/support or by contacting the LaserMax Customer Service Department at 1-800-527-3703. The LaserMax Limited Warranty extends specific legal rights to the registrant. Other rights, which vary from state to state, may also apply. This product is warranted to be free from defects in material and workmanship at the time of purchase. This limited warranty does not cover expendable parts (ex: batteries), that have definite and predictable life expectancies. This warranty does not cover products that LaserMax determines have been exposed to abnormal use in any way. Examples of abnormal use include, but are not limited to, damage from mishandling, misuse or abuse, damage from exposure to abnormal conditions, damage from improper care and maintenance, or installation of the product in or on any firearm model the product is not specifically advertised to be used with. Warranty coverage begins on the date of purchase and ends five (5) years after date of purchase. This limited warranty extends only to the original registrant and is non-transferable. To file a warranty claim, a warranty repair request must be submitted, and a Return Merchandise Authorization (RMA) number issued by the LaserMax Warranty Department, within five (5) years from date of purchase. Following submission of a warranty claim, LaserMax reserves the right to inspect the product to determine its eligibility for warranty coverage. If deemed eligible, LaserMax will repair or replace the part(s)/product that LaserMax, at its sole discretion, determines to be defective during the warranty period. If deemed ineligible, LaserMax will

return the part(s)/product with an explanation of why coverage is not available. LaserMax reserves the right to replace defective part(s)/product with an equivalent substitute product at its sole discretion. Any and all implied warranties, including the implied warranties of merchantability, fitness for a particular purpose, and non-infringement, also begin on the date of purchase and end five (5) years after date of purchase. This limitation does not apply to residents of states that disallow limitations on the length of implied warranties. The preceding process is both the exclusive remedy and LaserMax's exclusive liability for any warranty claim. LASERMAX WILL NOT, UNDER ANY CIRCUMSTANCES, BE LIABLE FOR ANY INCIDENTAL, INDIRECT, CONSEQUENTIAL, PUNITIVE OR EXEMPLARY DAMAGES (EVEN IF LASERMAX HAS BEEN NOTIFIED OF THE POSSIBILITY OF SUCH DAMAGES) RESULTING FROM OR RELATED TO A PRODUCT, INCLUDING, WITHOUT LIMITATION, ANY LOSS OF PROFIT, OPPORTUNITY, OR DAMAGES IN EXCESS OF THE PURCHASE PRICE OF THE WARRANTIED PRODUCT. THIS LIMITATION DOES NOT APPLY TO RESIDENTS OF STATES THAT DISALLOW LIMITATIONS ON INCIDENTAL OR CONSEQUENTIAL DAMAGES.

LaserMax Products

7629 Routes 5 & 20, Bloomfield, NY 14469

☎ 800-527-3703 • www.lasermax.com

For patent information, please visit: www.lasermax.com/patents

Copyright © 2024 Crosman Corporation. All rights reserved. LaserMax and the LaserMax logo are registered trademarks of Crosman Corporation. All other trademarks are property of their respective owners.

LM-CRDSA515

DANGER

Laser radiation is emitted from the front aperture of the laser when the switch is activated.

WARNING

Avoid direct eye exposure to beam.

REMINDER

Aiming a laser beam at moving vehicles including boats, aircraft, trains, and construction equipment may be illegal. Check current applicable laws and follow them accordingly.



LaserMax

CENTERFIRE® LASER SIGHT



USER GUIDE

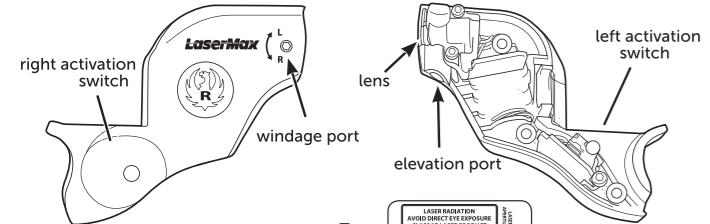
Ruger LCR® | LCRx® | .38 SPECIAL | .22 LR | .357 MAGNUM

For replacement parts please contact customer service at 800-527-3703

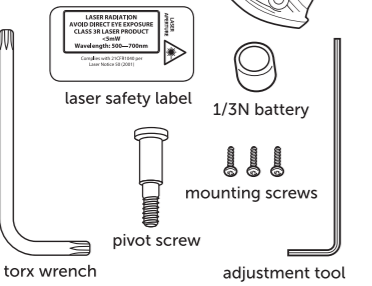
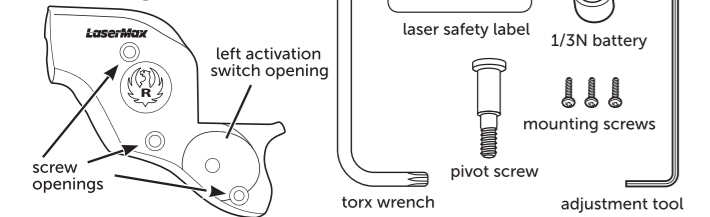
04816-A-1	Adjustment Tool
LMS-13N	Replacement Battery
LMS-2X13N	2-Pack Replacement Batteries
05216-0-1	Replacement Screws (takes 3)
05281-0-1	Pivot Screw
05320-0-1	Torx Wrench

PARTS IDENTIFICATION

Right Housing



Left Housing



INSTALLATION

IMPORTANT: Prior to installation, battery change, cleaning, or maintenance, follow the firearm operator's manual to ensure that the firearm is unloaded.

! This state-of-the-art laser sighting system is designed for use with a specific revolver platform. Do not attempt installation on any other firearm model/s.

1. Rotate the empty cylinder to the closed position.
2. Use supplied torx wrench to replace Ruger factory pivot screw with LaserMax pivot screw making sure it is firmly seated (**figure 1**).
3. Align channel in right housing with revolver trigger guard, ensuring that top of right housing is flush to the frame of the firearm (**figure 2**). Press firmly in place.
4. Mate left housing with right housing, ensuring that activation switch passes through opening in left housing. Press together to remove gap (**figure 3**).

! CenterFire® mounting screws are self-tapping; extra care should be taken when installing them for the first time to ensure that they are screwed in straight. Improper installation could cause the threads to strip

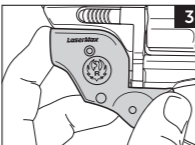
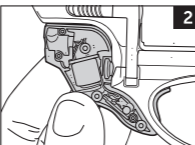
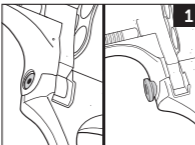
5. Install three (3) mounting screws into left housing with a Phillips screwdriver (not provided), starting with screw closest to the barrel (**figure 4**). Next, tighten each mounting screw until secure. Do not over-tighten; this may damage the CenterFire® housing.



To see this sight installed, scan this code or go to youtube.com/LaserMaxInc.

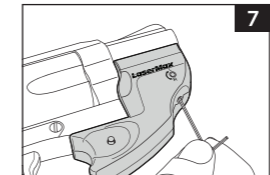
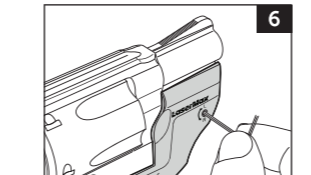
OPERATION

1. To turn the laser on, press in on the activation switch from either side (**figure 5**). Press again to turn the laser off.
2. To switch the aiming point from pulse to steady, press and release the activation switch from either side to activate the laser. Then, press and hold the activation switch for 5 seconds. The laser mode will change. Repeat the process to return to the previous mode.
3. To save power and prevent inadvertent battery drain, the CenterFire® will shut off automatically after a ten-minute period of inactivity. Cycle the activation switch to turn the laser back on.



ALIGNING THE LASER

1. Verify proper alignment by comparing laser aiming point to iron sights at a distance of 10 yards for initial alignment. The laser dot should be slightly above the iron sights.
2. To make adjustment, insert the adjustment tool into one of the two alignment ports (**figures 6 & 7**) and slowly rotate the tool while comparing laser position on target to fixed sights. Important: Do not rotate the adjustment tool more than one full turn in either direction from the factory position. This may cause damage to the laser and void the warranty. A one quarter turn will result in a movement of about 3 inches at 10 yards.
3. Windage adjustment: with muzzle pointing forward and adjustment tool inserted in to the windage port, a clockwise turn will shift the laser aiming point left and a counterclockwise turn will shift the laser beam right (**figure 6**).



4. Elevation adjustment: with the muzzle pointing forward and the adjustment tool inserted into the elevation port, a clockwise turn will shift the laser beam up and a counterclockwise turn will shift the laser beam down (**figure 7**).
5. Verify zero by shooting a target and making additional adjustments as needed.

Note: a slight shift in alignment may be observed after firing the first time. Recheck alignment after break in and readjust as necessary.

BATTERY PLACEMENT

TIP: During periods of non-use, test the LaserMax laser periodically to ensure adequate battery levels.

1. Remove mounting screws to separate the left housing from CenterFire® assembly.
2. Lift expended 1/3N Lithium battery out of right housing.
3. Install a fresh 1/3N Lithium battery with the positive (+) side facing down toward the spring (**figure 8**).
4. Reinstall the left housing as previously described in the INSTALLATION section.

CLEANING & MAINTENANCE

After repeated fire, the lens may become clouded with gunpowder residue. For the best results, it is recommended that this area be cleaned, along with the firearm, after each use. To clean the lens, follow these steps.

1. Keep firearm pointed in a safe direction.
2. Confirm laser is off.
3. Dampen the end of a cotton swab with isopropyl alcohol.
4. Apply dampened swab to lens and polish in a small circular pattern. Be sure to clean around the edges of lens.

Firearms should be cleaned and lubricated exactly as directed in the Owner's Manual. Excess lubricant can interfere with the proper function of both the firearm and the CenterFire® laser. LaserMax components should never be submerged or flushed with cleaning solvents. Failure to adhere to these guidelines may cause damage and make void the factory warranty.